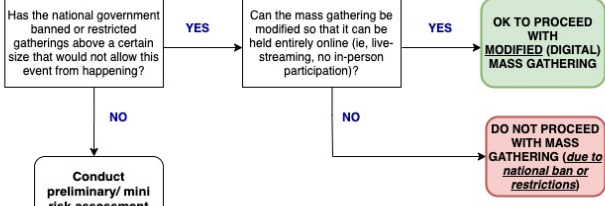
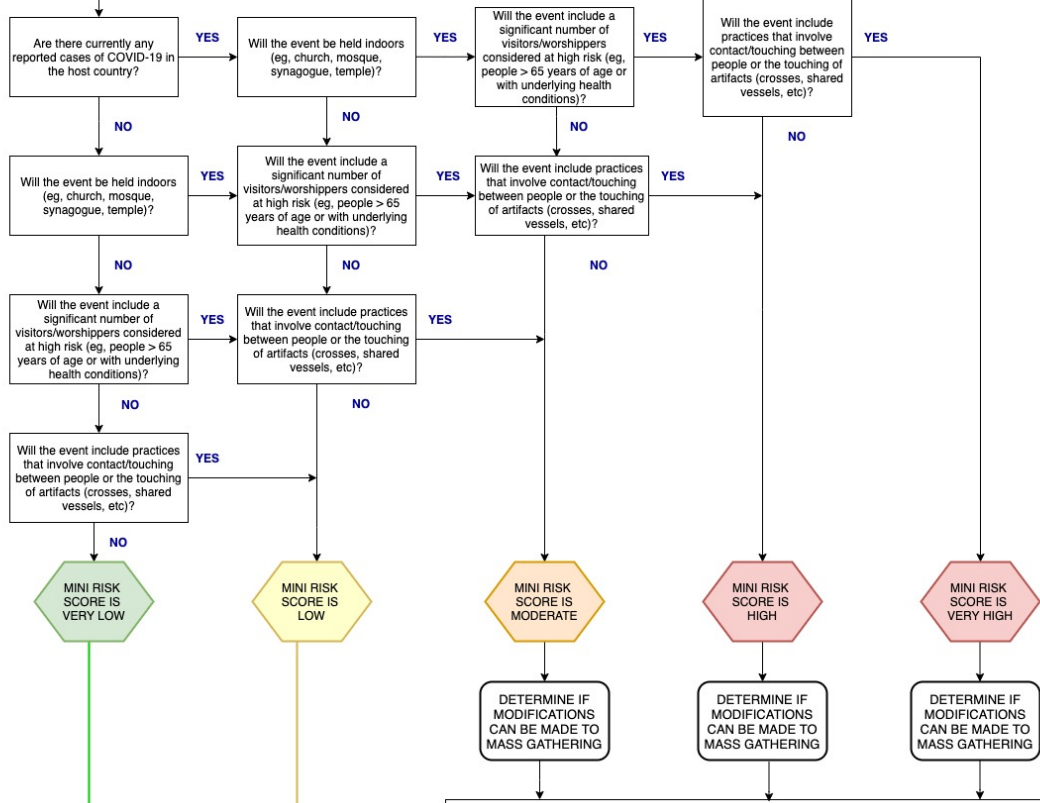


Identify Religious Mass Gathering

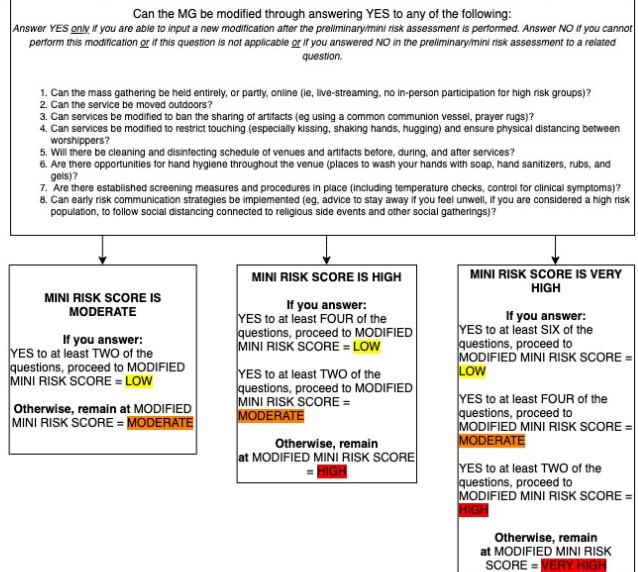


Disclaimer:
 A risk assessment should always be conducted for all mass gatherings (regardless of size or type), it should be based on the country strategy for controlling COVID-19 and should be updated periodically, in light of the new information available.
 It is WHO's view that all countries with community transmission should seriously consider postponing or reducing mass gatherings that bring people together and have the potential to amplify disease and support the recommended best practice of physical distancing. Any decision will be supported through the use of WHO tools, in particular the Risk Assessment for Mass Gatherings during COVID-19.
 If movement restrictions and further national measures have been established in the country, the WHO RA does not apply. However, when the process of re-opening/conducting mass gatherings is being considered post movement restrictions, it will be key to ensure any decisions are based on a risk assessment, such as the WHO Mass gatherings COVID-19 risk assessment.
 This guidance may change as the situation and the knowledge about COVID-19 evolves. WHO may provide advice and technical guidance to host countries on public health risks, but has no decision power to uphold, postpone, or cancel mass gatherings hosted by Member States.

Mini Risk Assessment



Possibility of Modifications



Recommendations

